

# Legierungszuschläge April 2020 in €/kg

## Basis Outokumpu

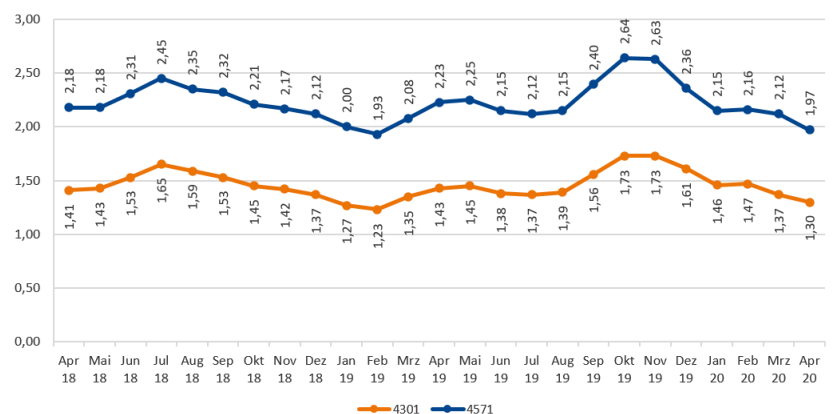
| Werkstoff     | Rohre Geschw. | Rohre Nahtlos | Hohl-Stahl  | Bleche      | Stab Gewalzt | Stahl Blank | Werkstoff     |
|---------------|---------------|---------------|-------------|-------------|--------------|-------------|---------------|
| 1.4006        |               |               |             |             | 0,53         | 0,58        | 1.4006        |
| 1.4016        |               |               |             | 0,56        | 0,52         | 0,58        | 1.4016        |
| 1.4021        |               |               |             | 0,52        | 0,47         | 0,52        | 1.4021        |
| 1.4024        |               |               |             |             | 0,46         | 0,51        | 1.4024        |
| 1.4034        |               |               |             | 0,53        | 0,48         | 0,53        | 1.4034        |
| 1.4057        |               |               |             |             | 0,72         | 0,80        | 1.4057        |
| 1.4104        |               |               |             |             | 0,60         | 0,66        | 1.4104        |
| 1.4112        |               |               |             |             | 0,74         | 0,83        | 1.4112        |
| 1.4122        |               |               |             |             | 0,77         | 0,86        | 1.4122        |
| <b>1.4301</b> | <b>1,51</b>   | <b>2,21</b>   | <b>1,99</b> | <b>1,30</b> | <b>1,40</b>  | <b>1,57</b> | <b>1.4301</b> |
| 1.4305        |               |               |             |             | 1,39         | 1,56        | 1.4305        |
| 1.4306        | 1,67          | 2,21          | 1,99        | 1,45        | 1,61         | 1,81        | 1.4306        |
| 1.4310        |               |               |             | 1,46        | 1,34         | 1,49        | 1.4310        |
| 1.4162        |               |               |             | 0,84        |              |             | 1.4162        |
| 1.4401/4      | 2,25          | 3,01          | 2,71        | 1,94        | 2,10         | 2,36        | 1.4401/4      |
| 1.4435        | 2,52          | 3,38          | 3,04        | 2,19        | 2,35         | 2,63        | 1.4435        |
| 1.4462        | 1,98          | 2,47          | 2,24        | 1,69        | 1,65         | 1,85        | 1.4462        |
| 1.4529        |               |               |             | 3,83        | 4,33         | 4,84        | 1.4529        |
| 1.4539        | 4,06          | 5,48          | 4,98        | 3,51        | 3,81         | 4,29        | 1.4539        |
| 1.4541        | 1,66          | 2,17          | 2,04        | 1,42        | 1,54         | 1,73        | 1.4541        |
| 1.4542        |               |               |             |             | 1,10         | 1,23        | 1.4542        |
| 1.4548        |               |               |             |             | 1,12         | 1,25        | 1.4548        |
| <b>1.4571</b> | <b>2,28</b>   | <b>2,98</b>   | <b>2,68</b> | <b>1,97</b> | <b>2,07</b>  | <b>2,32</b> | <b>1.4571</b> |
| 1.4509        |               |               |             | 0,69        |              |             | 1.4509        |
| 1.4828        | 1,95          | 2,51          | 2,28        | 1,71        | 1,77         | 1,98        | 1.4828        |
| 1.4841        |               | 3,55          | 3,23        | 2,46        | 2,65         | 2,98        | 1.4841        |

**Rohrzubehör:**

**1.4541**  
**1.4571**

**43 %**  
**50 %**

Legierungszuschläge Bleche in €/kg



**Alle Angaben ohne Gewähr**

[www.bucher-stahl.de](http://www.bucher-stahl.de)

